

Unlocking Dignity: How to improve the reintegration experience of justice-involved people with life-limiting illnesses into community

Presenters: Iridian Grenada & Mar'yana Fisher

Date: March 6, 2025



BY
Pallium Canada



*The BC Centre for Palliative Care
is the provincial hub partner of the
Palliative Care ECHO Project in British
Columbia*



The BC Centre for Palliative Care, works with partners across the land colonially known as British Columbia. The work we do occurs on the territories of many distinct First Nations. We are grateful to all the First Nations who have cared for and nurtured the lands and waters around us for all time.

We recognize that all of you joining us online may be participating from traditional territories of other Indigenous peoples. From coast to coast to coast, we acknowledge the ancestral and unceded territory of all the Inuit, Métis, and First Nations people that call this land home.

The Palliative Care ECHO Project

The Palliative Care ECHO Project is a 5-year national initiative to cultivate communities of practice and establish continuous professional development among health care providers across Canada who care for patients with life-limiting illness.

Stay connected: www.echopalliative.com



Thank You

The Palliative Care ECHO Project is supported by a financial contribution from Health Canada.

Production of this presentation has been made possible through a financial contribution from Health Canada. The views expressed herein do not necessarily represent the views of Health Canada.



Health
Canada

Santé
Canada



Introductions

Presenters

Mar'yana Fisher, PhD (c)

CNS, palliative care

First Nations Health Authority

Iridian Grenada

Advisor / Director / Consultant

International Corrections & Prisons
Association, John Howard Society of
Canada Canada, Grow, Transform,
Belong (UK), 7th Step BC & Yukon



Learning Objectives

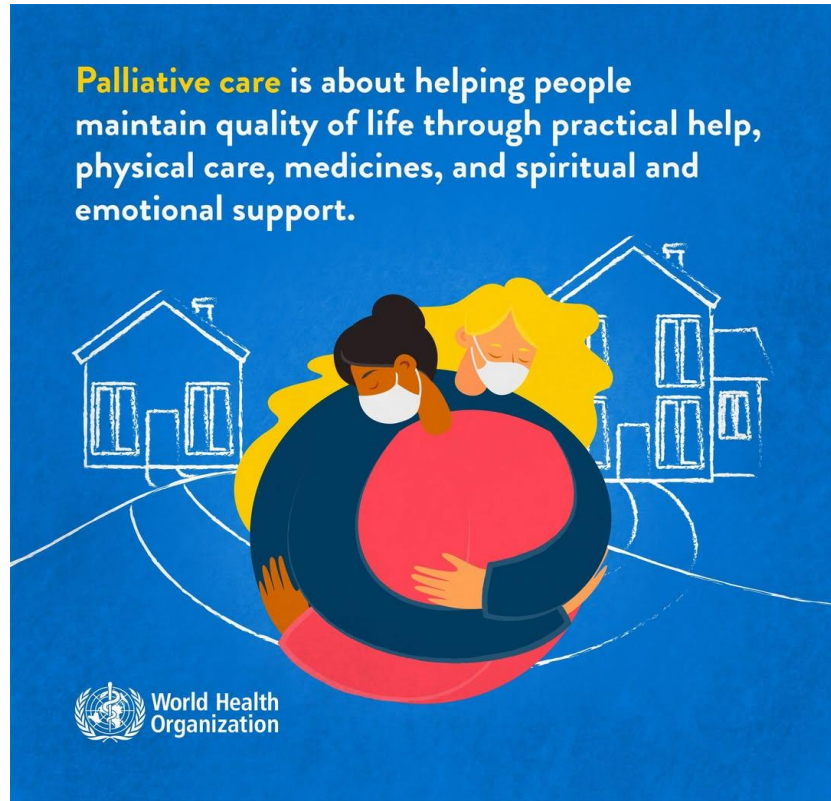
By the end of the session, participants will be able to:

Understand the importance and current options for end-of-life care for justice-involved people

Identify barriers and gaps in community-based palliative care

Explore interdisciplinary collaborations and generate actionable solutions to improve reintegration into community

The Importance of Palliative Care for Justice-Involved Individuals



High rates of **chronic and life-limiting illnesses**



Barriers to **timely diagnosis and treatment**



The **impact of incarceration on health outcomes**



Importance of **dignity, symptom management, and psychosocial support**

End-of-Life Care Options in Correctional Settings

Under the policy outlined in *CCRA*, incarcerated people living with terminal illnesses may qualify for care in the community. The available options include:

parole by exception

temporary absence

the Royal Prerogative of Mercy

Health of Older Justice-Involved People on Conditional Release in the Community

In 2020, Canada had 39% of federal older persons on release in the community.

"Older" (50 years of age and older) age poses complexity for adaptation in the community:

individuals who served long-term sentences

women also face unique challenges

serving longer prison sentences and being a woman also exacerbates access

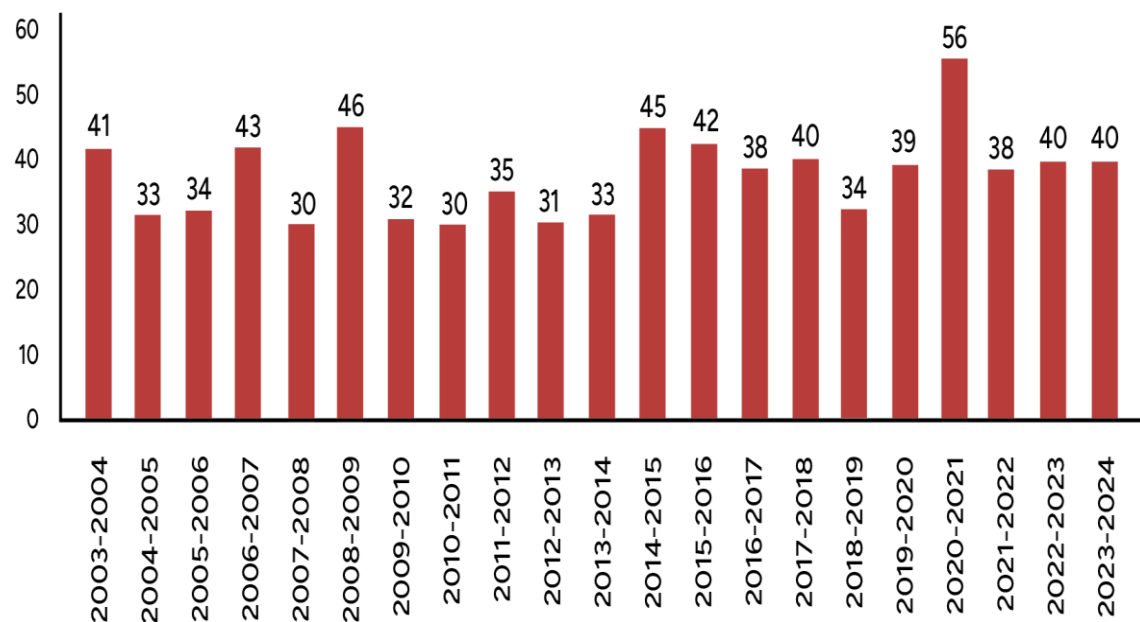
Lack of Community Alternatives in BC

Suitable community alternatives, such as designated halfway houses retrofitted to support older individuals requiring palliative and end-of-life care, are limited.

OCI (2019) report illuminated the incidents when federally incarcerated individuals were granted parole but were unable to leave prison due to a shortage of appropriate community placements.

Restrictions placed by parole conditions or temporary absences may prevent individuals from returning to home communities.

Number of deaths by natural causes in Canadian Federal Custody from 2003-2004 to 2023-2024



| | DAY PAROLE BY EXCEPTION | FULL PAROLE BY EXCEPTION | TOTAL |
|--------------|-------------------------|--------------------------|--------------------|
| Fiscal Year | Granted/Considered | Granted/Considered | Granted/Considered |
| 2015-16 | 0 | 3/3 | 3/3 |
| 2016-17 | 0 | 1/2 | 1/2 |
| 2017-18 | 0 | 1/2 | 1/2 |
| 2018-19 | 1/1 | 6/6 | 7/7 |
| 2019-20 | 0/1 | 4/5 | 4/6 |
| TOTAL | 1/2 | 15/18 | 16/20 |

Sources: For 2003-04 to 2012-13: *CSC Data Warehouse* (accessed September 2013). For 2013-14 to 2023-24, CSC's *Corporate Reporting System-Modernized (CRS-M)*; Extraction date: April 29, 2024).

Source: Parole Board of Canada, *Performance Monitoring Report (2019-2020)*.

A LIFE IN...THE HOUSE OF THE DEAD

Apprentice



Time traveler



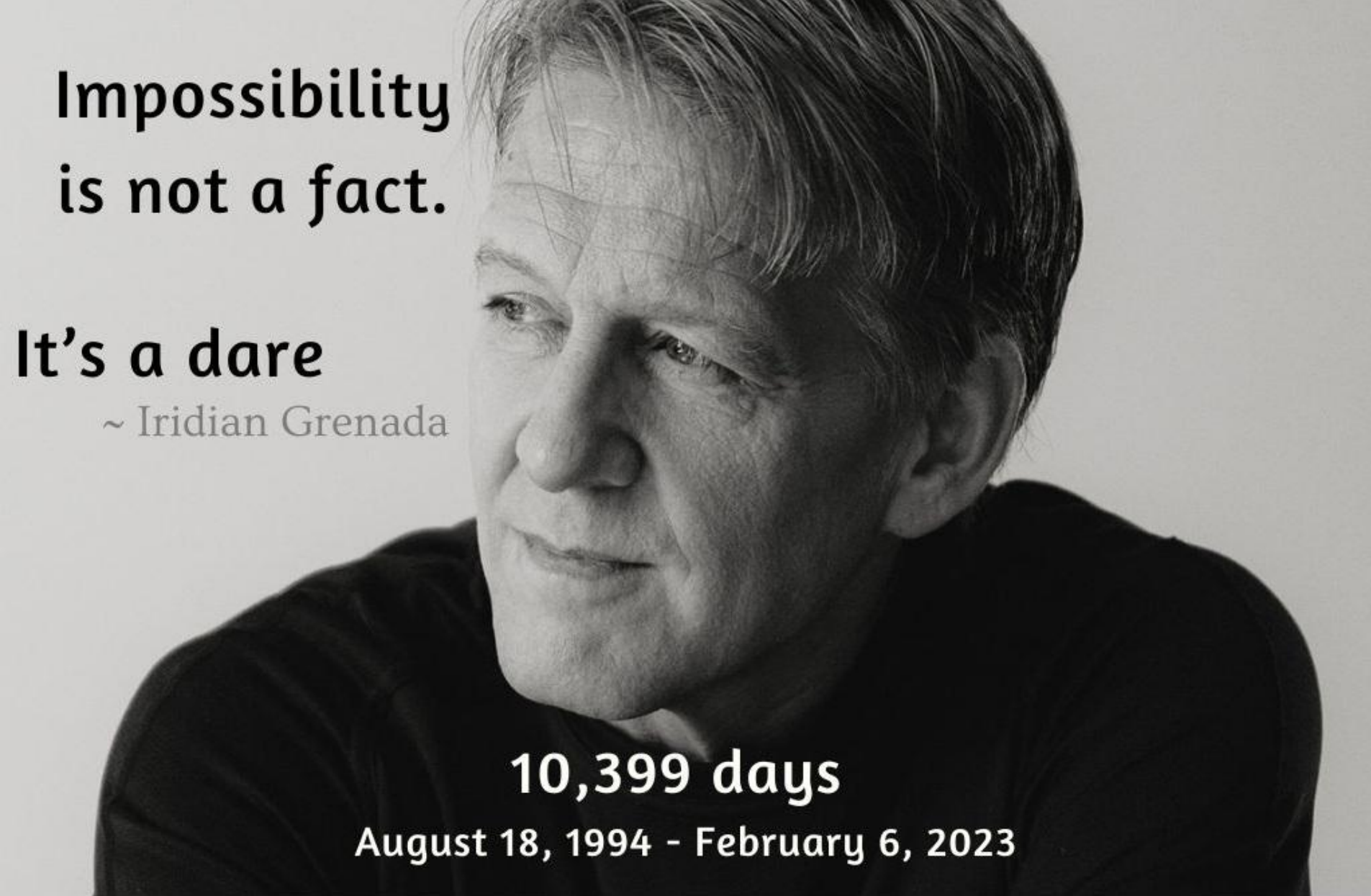
A close-up, black and white portrait of Nelson Mandela, showing his face from the nose up, with his eyes looking slightly to the left. The background is dark.

**It always seems impossible
until it's done.**

~ Nelson Mandela

10,052 days

August 5, 1962 - February 11, 1990

A black and white portrait of a man with short, light-colored hair, looking slightly to the left. He is wearing a dark, long-sleeved shirt. The background is a plain, light color.

**Impossibility
is not a fact.**

It's a dare

~ Iridian Grenada

10,399 days

August 18, 1994 - February 6, 2023

The Role of Interdisciplinary and Inter-Agency Collaboration

- Who Needs to Be Involved?
- Correctional healthcare providers
- Community palliative care teams
- Social workers, peer mentors, and housing support programs
- Legal advocates and policymakers
- **Each and Everyone of US**



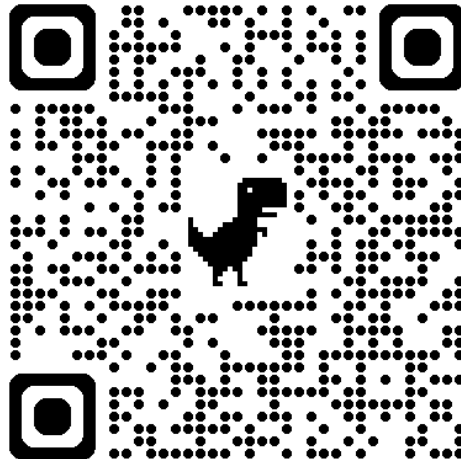
Group Discussion & Brainstorming

- Discuss **innovative strategies** to enhance access to palliative care in the community
- Envision **pathways that support reintegration** of justice-involved individuals with life-limiting illnesses
- What would be the biggest **gaps in care** for this population from the perspective of your individual roles?
- What **innovative solutions or partnerships** could be piloted?

Yellow Ribbon Run Project



March 22, 2025
9:30 – 12:30
Mill Lake Park
Abbotsford, B.C.



Questions/Comments

